



The Towns on Evelyn

Leasing Office:

TCC at Whisperwood Apartments

3602 Brookridge Terrace
Building 3602
Harrisburg, PA 17109

Mon.-Fri. 9:00 am - 5:00 pm

Call or Text: 717-657-5402

Fax: 717-671-5886

***We'd Love to See You
in Our Community!***

**2 & 3 Bedroom Townhomes in Swatara Township,
Harrisburg: Central Dauphin School District**

The Towns on Evelyn is Located at:

6635 Evelyn St.
Harrisburg, PA 17111

Visit us online at:

www.TripleCrownCorp.com

Updated 05/27/2020



Home Amenities

- 2 & 3 bedroom, 1½ bath townhomes with private entrance
- Some homes with finished or unfinished basement
- Choice of three floor plans
- Appliance package includes refrigerator, stove/range, washer, and dryer
- Select homes with built-in dishwasher and microwave
- Window blinds throughout
- Abundance of closet space throughout
- Central air conditioning
- Economical gas heat

Community Features

- Access to Whisperwood Apartments community swimming pool
- We're pet friendly (breed restrictions)
- For your convenience, we offer online payment and auto-pay

Rent & Application Details

Application Fee: \$35.00 per person

Reservation Fee*: \$200.00

*Reservation fee required to hold the home

Please note: after application approval, you may not cancel without forfeiting this fee.

Security Deposit*: starting at ½ month's rent

*Applies to qualified applicants. See leasing associate for details.

Pet Privilege Fee: 1 pet \$250/ 2 pets \$350

*Non-refundable

Monthly Pet Rent:

1 Pet: \$30.00

2 Pets: \$50.00

We cannot allow:

Pit Bulls (Staffordshire Terriers), Doberman Pinchers, Rottweilers, Chow Chows, Siberian Huskies, Akitas, Presa Canarios, Alaskan Malamutes, German Shepherds, Wolf hybrids and Great Danes are not permitted to occupy or visit the rental homes. Similarly, any animal with a bite history, aggressive nature or similar offense will be restricted as well. Mixes of these breeds will also not be accepted.

Rabbits, ferrets, snakes or other reptiles are also not permitted in the community

Included in Rent:

- Trash
- 24-Hour Maintenance
- Landscaping
- Snow Removal

Resident Responsibilities:

- Gas
- Electric
- \$50 Water
- \$40 Sewer
- Renter's Insurance

About Us



Triple Crown Corporation

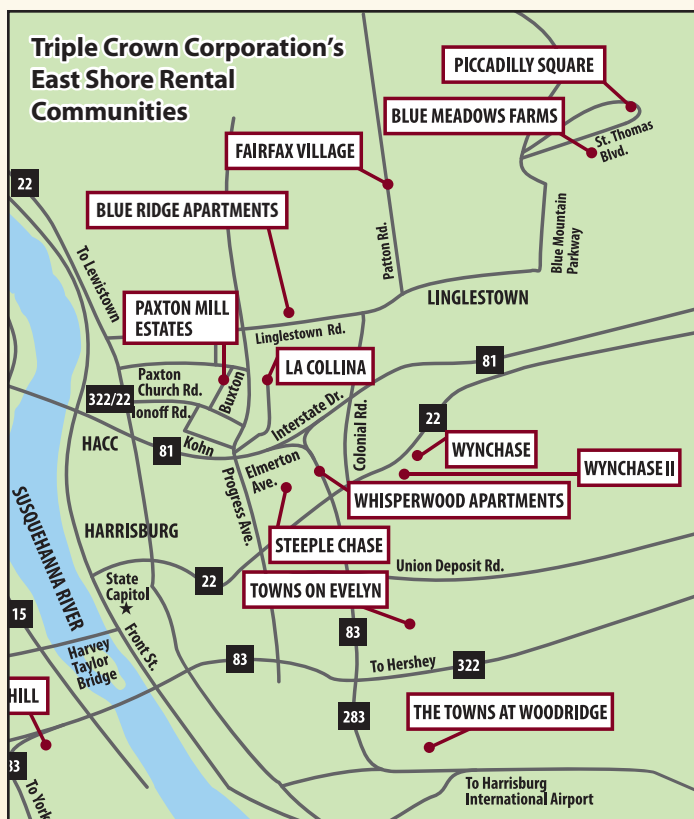
DEVELOPERS ■ BUILDERS ■ MANAGERS

Providing excellence in real estate services since 1977

Triple Crown Corporation is a financially stable and family-owned company, "**Providing excellence in real estate services,**" in the Harrisburg area since 1977. We are a builder, developer, and property management company. We strive to provide excellent real estate services of the highest quality and best value to the customer. This goal challenges us to deliver excellent service consistently to each of our customers.

Now in its second and third generation, Triple Crown Corporation continues to excel in acquiring, developing, and managing property. We focus on expanding into new areas while adjusting to a changing economy. Since 2007, we've been developing, following, and measuring 3-year strategic growth plans to help us stay focused on our core business operations. We attain results through flexibility, anticipation and resilience. Our continued success, long-term profitability, and growth depend heavily on three factors: resourceful people doing purpose-driven work; delivering high quality places to live and work, as well as growing through best value acquisitions; and margin optimization.

www.TripleCrownCorp.com



Directions

TCC at The Towns on Evelyn

From 83 South, take Exit 47 for US-322/Derry St. Keep right at the fork and follow signs to turn LEFT onto Derry St. After 1.8 miles, turn LEFT onto N 61st St. In .4 miles, turn RIGHT onto Evelyn St. The Towns on Evelyn will be .6 miles on the right.

Contact Our Leasing Office

3602 Brookridge Terrace • Building 3602
Harrisburg, PA 17109

Call or Text: 717-657-5402

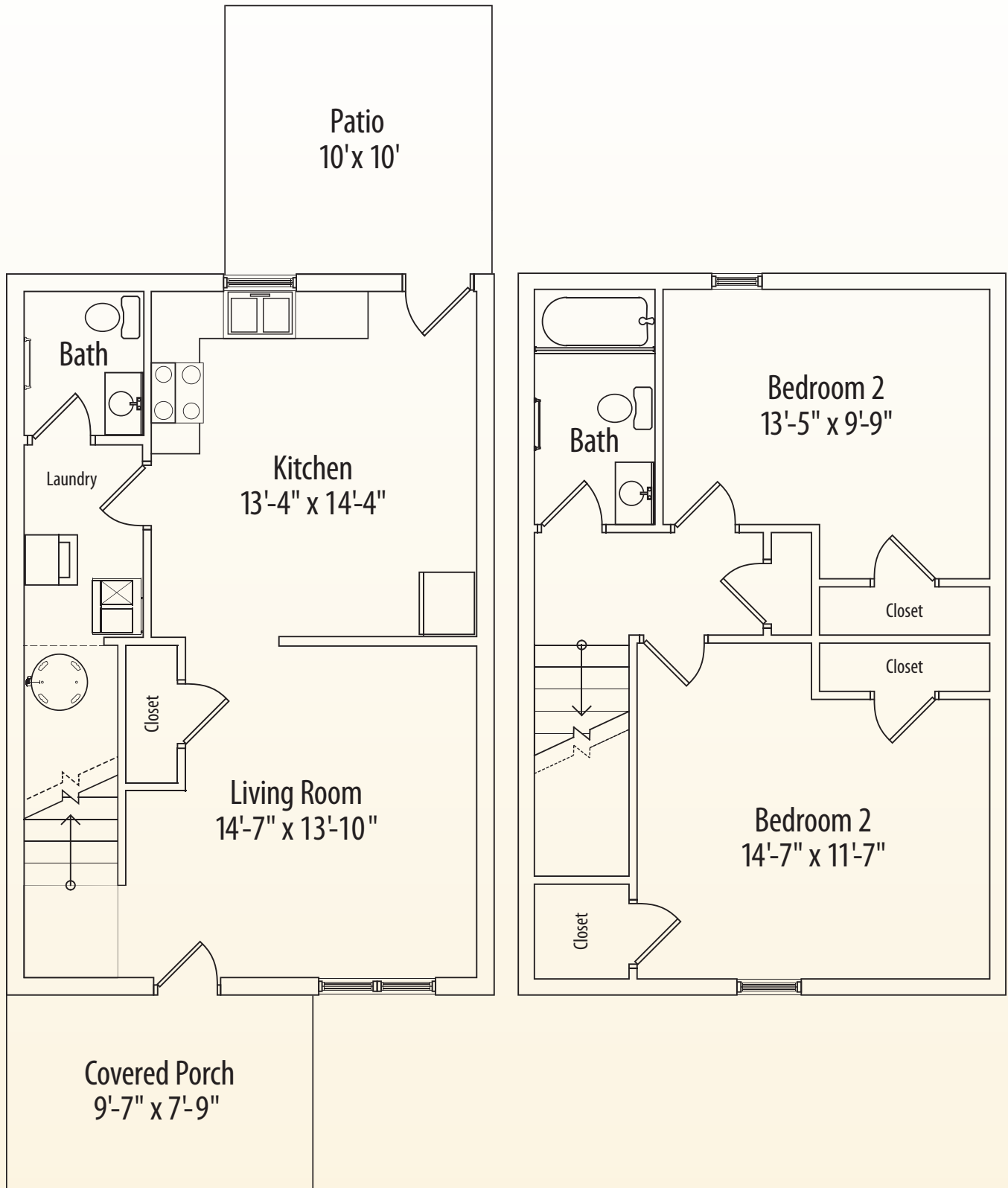
Fax: 717-671-5886

Find our Leasing Office on Facebook!



Scan this code or search online for Triple Crown Corporation at Whisperwood Apartments





The Keys
1,078 ft.²

2 Bedrooms
 1½ Bath

Current Rental Rate

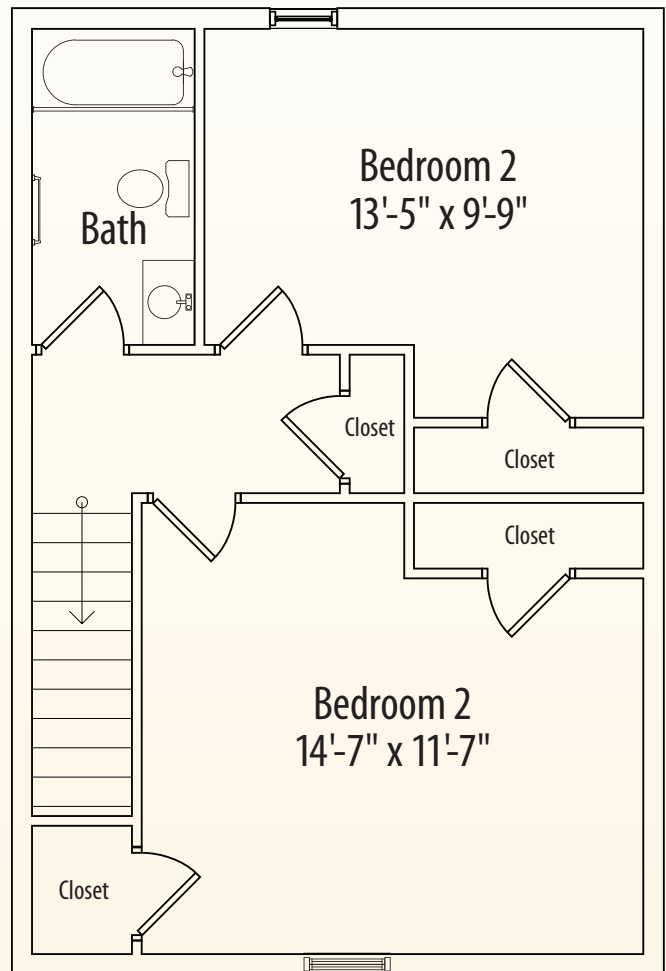
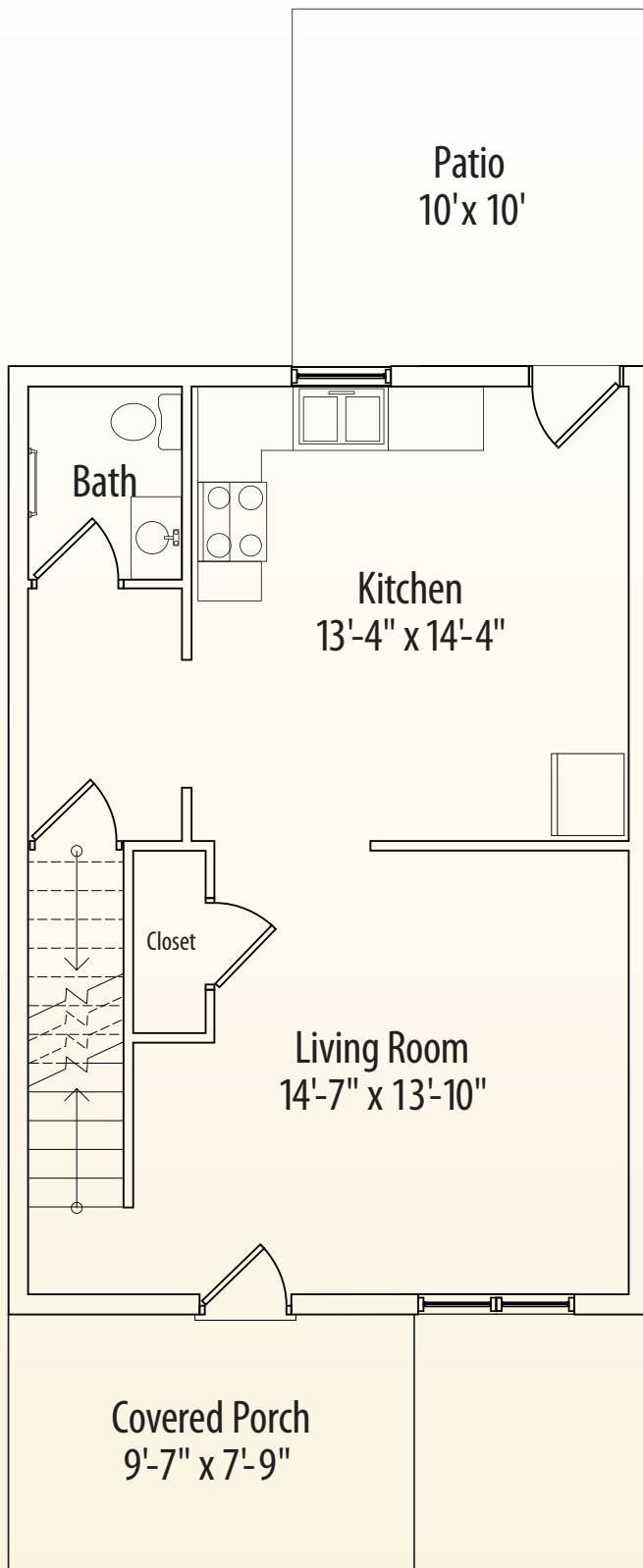
\$ _____

per month for a ____ month lease

Leasing Office: TCC at Whisperwood Apartments
 3602 Brookridge Terrace • Building 3602 • Harrisburg, PA 17109

717-657-5402
www.TripleCrownCorp.com

Triple Crown Corporation
 DEVELOPERS ■ BUILDERS ■ MANAGERS
Providing excellence in real estate services since 1977



The Dubrow
1,078 ft.²

2 Bedrooms, 1½ Bath
Unfinished Basement

Current Rental Rate

\$ _____

per month for a ____ month lease

Leasing Office: TCC at Whisperwood Apartments

3602 Brookridge Terrace • Building 3602 • Harrisburg, PA 17109

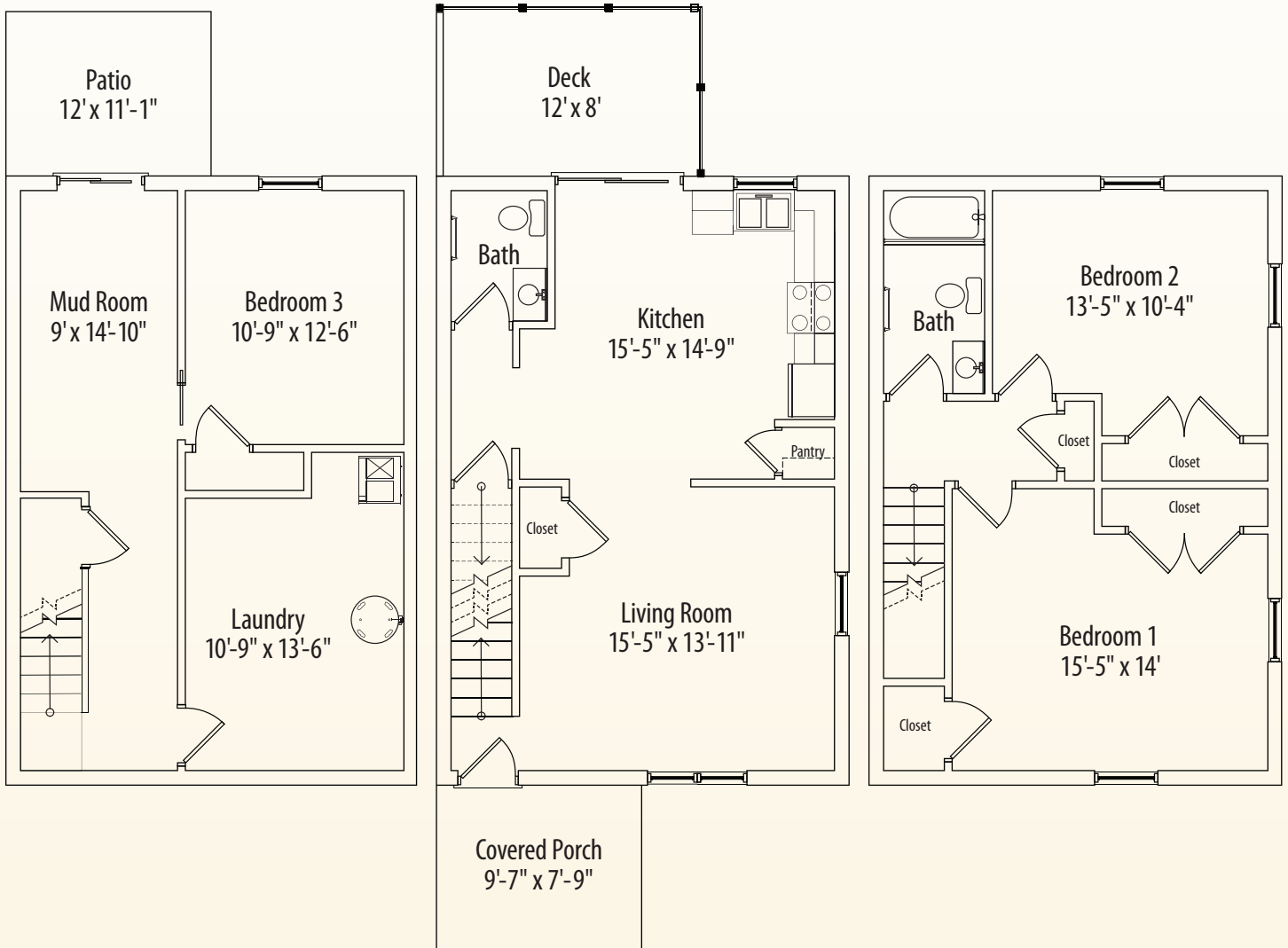
717-657-5402

www.TripleCrownCorp.com



Triple Crown Corporation
DEVELOPERS ■ BUILDERS ■ MANAGERS

Providing excellence in real estate services since 1977



The Ashford

1,689 ft.²

3 Bedroom
1½ Bath

Current Rental Rate

\$ _____

per month for a ____ month lease

Leasing Office: TCC at Whisperwood Apartments

3602 Brookridge Terrace • Building 3602 • Harrisburg, PA 17109

717-657-5402

www.TripleCrownCorp.com



Triple Crown Corporation
DEVELOPERS ■ BUILDERS ■ MANAGERS

Providing excellence in real estate services since 1977