



We'd Love to See YOU in Our Community!

Studio, 1, & 2 Bedroom Apartments with Elevator
Lower Paxton Township, Harrisburg - Central Dauphin School District



For more information or to reserve your home today, **CONTACT US!**

Call: 717-775-6424

TEXT: 717-214-4580

Visit us online at: www.TripleCrownCorp.com

Updated 01/31/2020

Home Amenities

Apartment:

- Multiple floor plan options:
 - Studio
 - 1 bedroom, 1 bath
 - 2 bedroom, 2 bath
- Spacious, modern designed homes
- Private balcony/patio (*most homes*)
- Upgraded full size washer & dryer
- Upgraded matte slate finish refrigerator, oven, microwave, and dishwasher
- Stylish recycled glass countertops
- Garbage disposal
- Oversized windows
- Window blinds throughout
- Central air conditioning
- USB outlets in apartment home

Community Features

Community:

- Community clubhouse
- Fitness center
- Swimming pool with sundeck
- Fire-pit recreation area
- Tot-lot
- Smoke free apartments
- Elevator in building
- Custom LED lighting in hallways
- Pet-friendly (breed/size restrictions)
- On-site leasing office
- 24-hour emergency service
- Owner managed
- Resident events
- Online payment accepted

Proudly
developed, built
& managed by:



Triple Crown Corporation
DEVELOPERS ■ BUILDERS ■ MANAGERS

Providing excellence in real estate services since 1977

Rent & Application Details

Application Fee: \$35.00 per person

Reservation Fee*: \$200.00

*Reservation fee required to hold the home

Please note: after application approval, you may not cancel without forfeiting this fee.

Security Deposit*: starting at ½ month's rent

*Applies to qualified applicants. See leasing associate for details.

Pet Privilege Fee*: 1 pet \$250.00/2 pets \$350.00

*Non-refundable. Small breed dogs 25 lb. and under.

Doggie DNA Program*: \$50.00/dog

*One-time fee. Non-refundable.

Monthly Pet Rent:

1 Pet: \$30.00

2 Pets: \$50.00

We cannot allow:

Dogs over 25 lb. weight. Pit Bulls (Staffordshire Terriers), Doberman Pinchers, Rottweilers, Chow Chows, Siberian Huskies, Akitas, Presa Canarios, Alaskan Malamutes, German Shepherds, Wolf hybrids and Great Danes are not permitted to occupy or visit the rental homes. Similarly, any animal with a bite history, aggressive nature or similar offense will be restricted as well. Mixes of these breeds will also not be accepted.

Rabbits, ferrets, snakes or other reptiles are also not permitted in the community

Included in Rent:

- Trash
- 24-Hour Maintenance
- Landscaping
- Snow Removal

Resident Responsibilities:

- Electric
- Water
- Sewer
- Gas Heat
- Renter's Insurance

About Us



Triple Crown Corporation

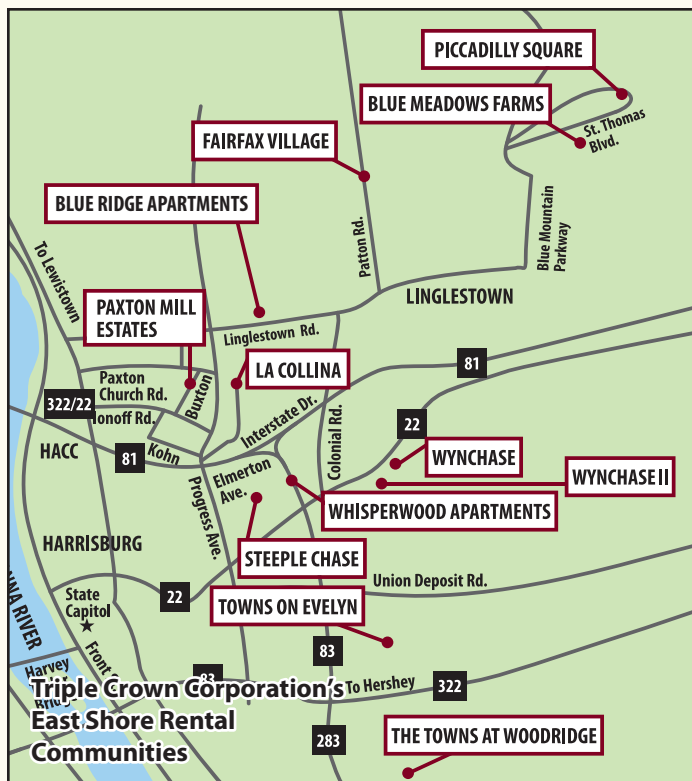
DEVELOPERS ■ BUILDERS ■ MANAGERS

Providing excellence in real estate services since 1977

Triple Crown Corporation is a financially stable and family-owned company, "**Providing excellence in real estate services,**" in the Harrisburg area since 1977. We are a builder, developer, and property management company. We strive to provide excellent real estate services of the highest quality and best value to the customer. This goal challenges us to deliver excellent service consistently to each of our customers.

Now in its second and third generation, Triple Crown Corporation continues to excel in acquiring, developing, and managing property. We focus on expanding into new areas while adjusting to a changing economy. Since 2007, we've been developing, following, and measuring 3-year strategic growth plans to help us stay focused on our core business operations. We attain results through flexibility, anticipation and resilience. Our continued success, long-term profitability, and growth depend heavily on three factors: resourceful people doing purpose-driven work; delivering high quality places to live and work, as well as growing through best value acquisitions; and margin optimization.

www.TripleCrownCorp.com



Directions

From I-81 North:

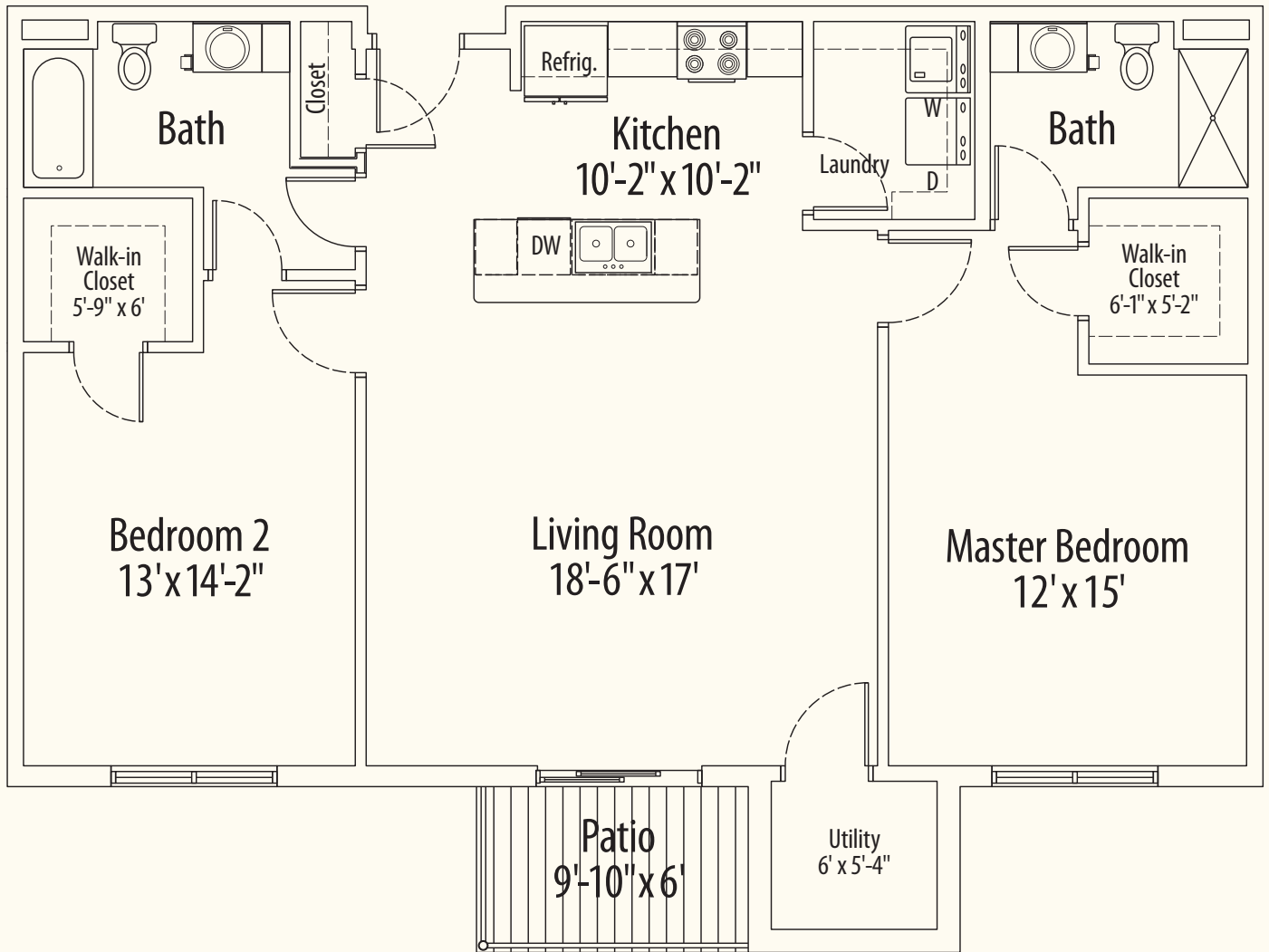
Take the Progress Ave. exit. Turn Left onto Progress Ave. Continue 2 miles, then turn Right onto PA-39 E/Linglestown Rd. Blue Ridge Apartments will be on the Left.

Contact Our Leasing Team

Call: 717-775-6424

TEXT: 717-214-4580

Blue Ridge Apartments are located at:
3940 Linglestown Road
Harrisburg, PA 17110



<p>Floor Plan A 1217 ft.² 2 Bedroom • 2 Bath</p>	<p>Current Rental Rate \$ _____ per month for a _ month lease</p>
--	--

For Leasing Information:

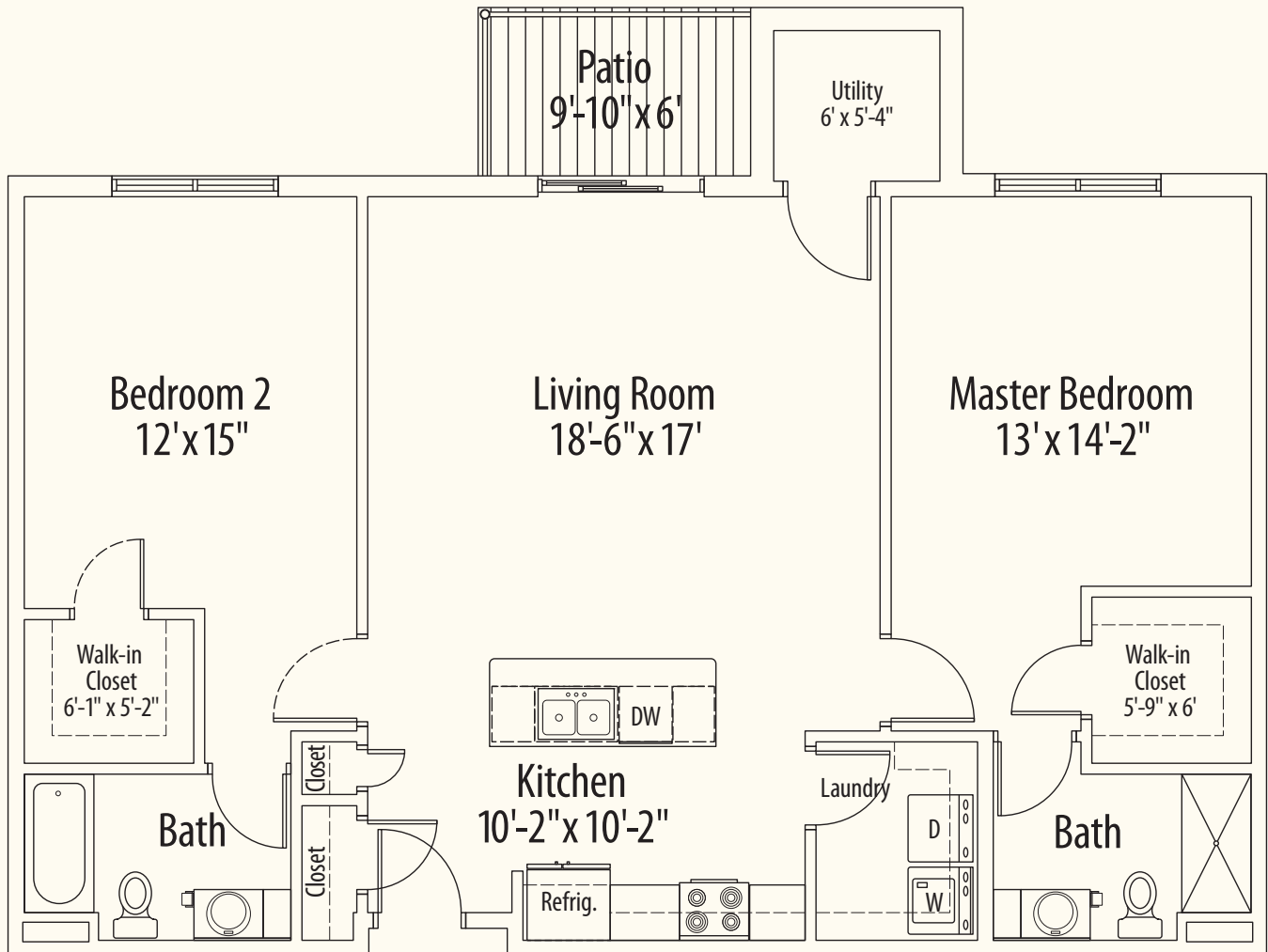
717-775-6424

www.TripleCrownCorp.com



Triple Crown Corporation
DEVELOPERS ■ BUILDERS ■ MANAGERS

Providing excellence in real estate services since 1977



Floor Plan B

1218 ft.²

2 Bedroom • 2 Bath

Current Rental Rate

\$ _____

per month for a _ month lease

For Leasing Information:

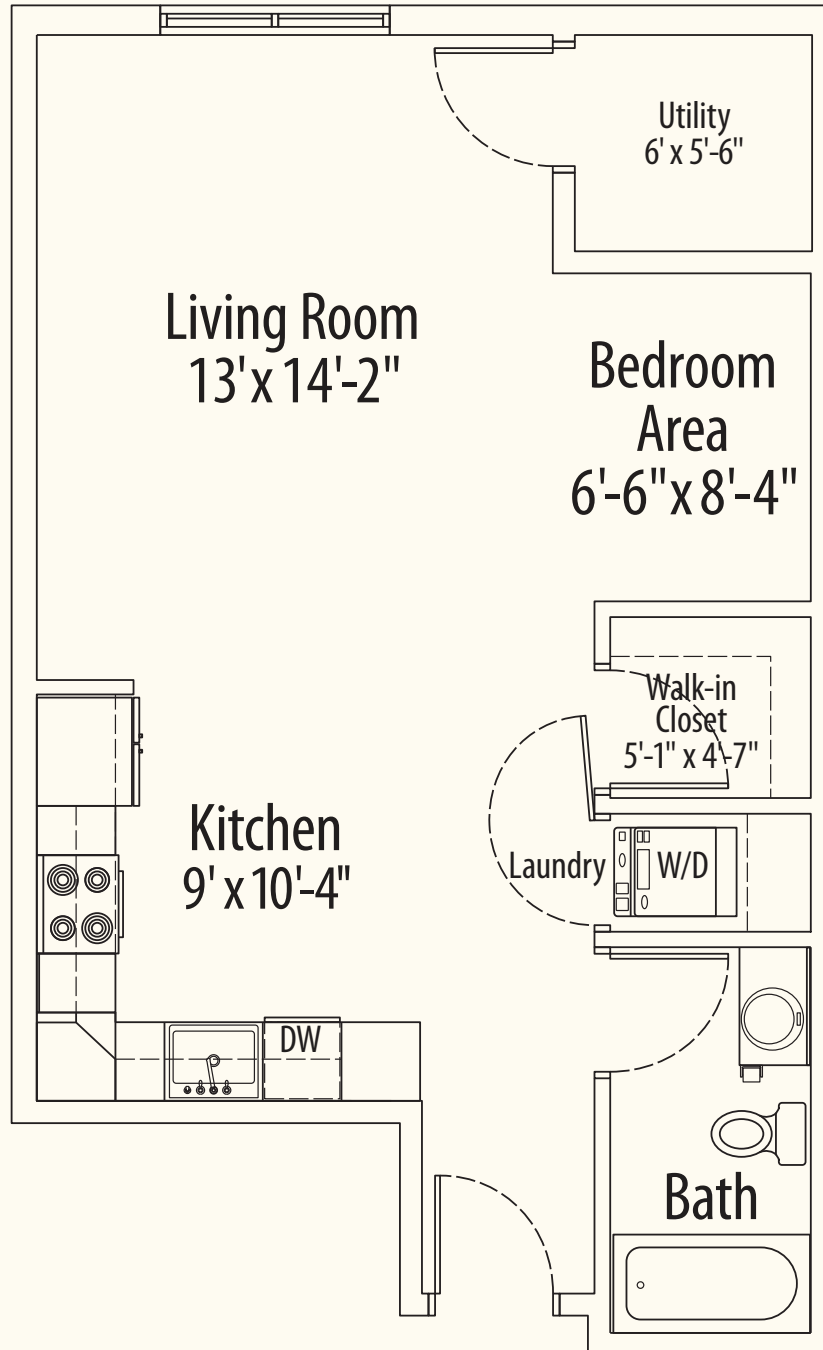
717-775-6424

www.TripleCrownCorp.com



Triple Crown Corporation
DEVELOPERS ■ BUILDERS ■ MANAGERS

Providing excellence in real estate services since 1977



Floor Plan C

591 ft.²
Studio

Current Rental Rate

\$ _____

per month for a _ month lease

For Leasing Information:

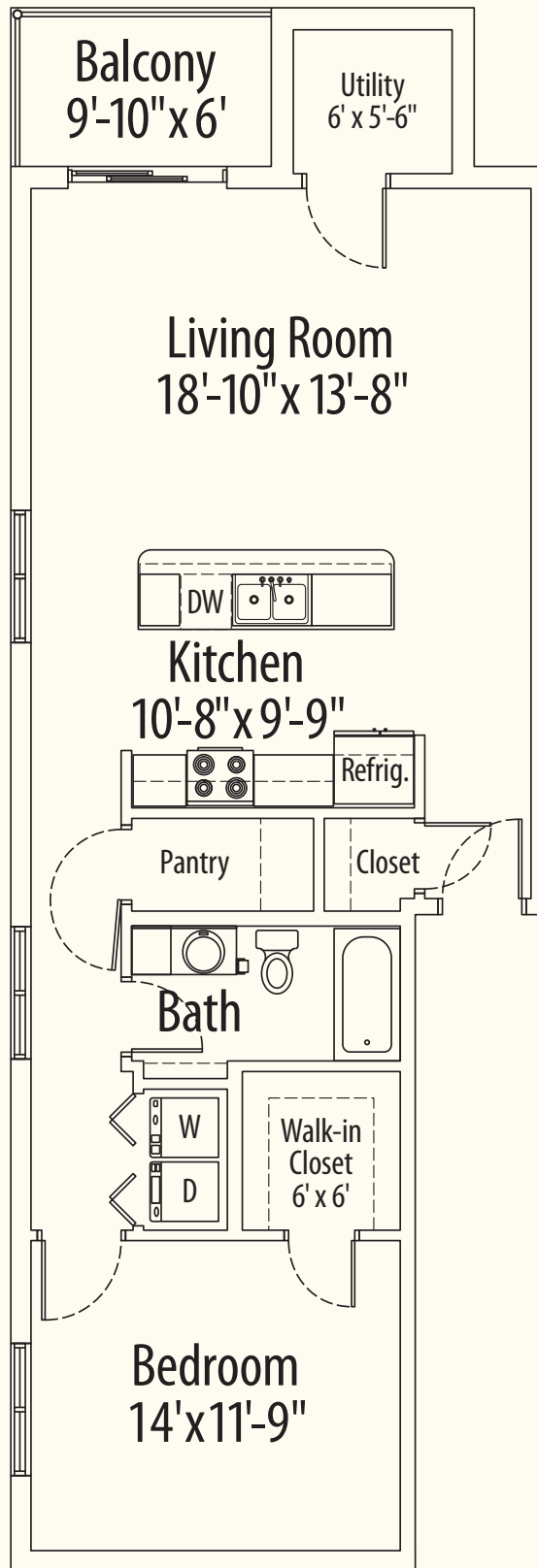
717-775-6424

www.TripleCrownCorp.com



Triple Crown Corporation
DEVELOPERS ■ BUILDERS ■ MANAGERS

Providing excellence in real estate services since 1977



Floor Plan D

853 ft.²

1 Bedroom • 1 Bath

Current Rental Rate

\$ _____

per month for a _ month lease

For Leasing Information:

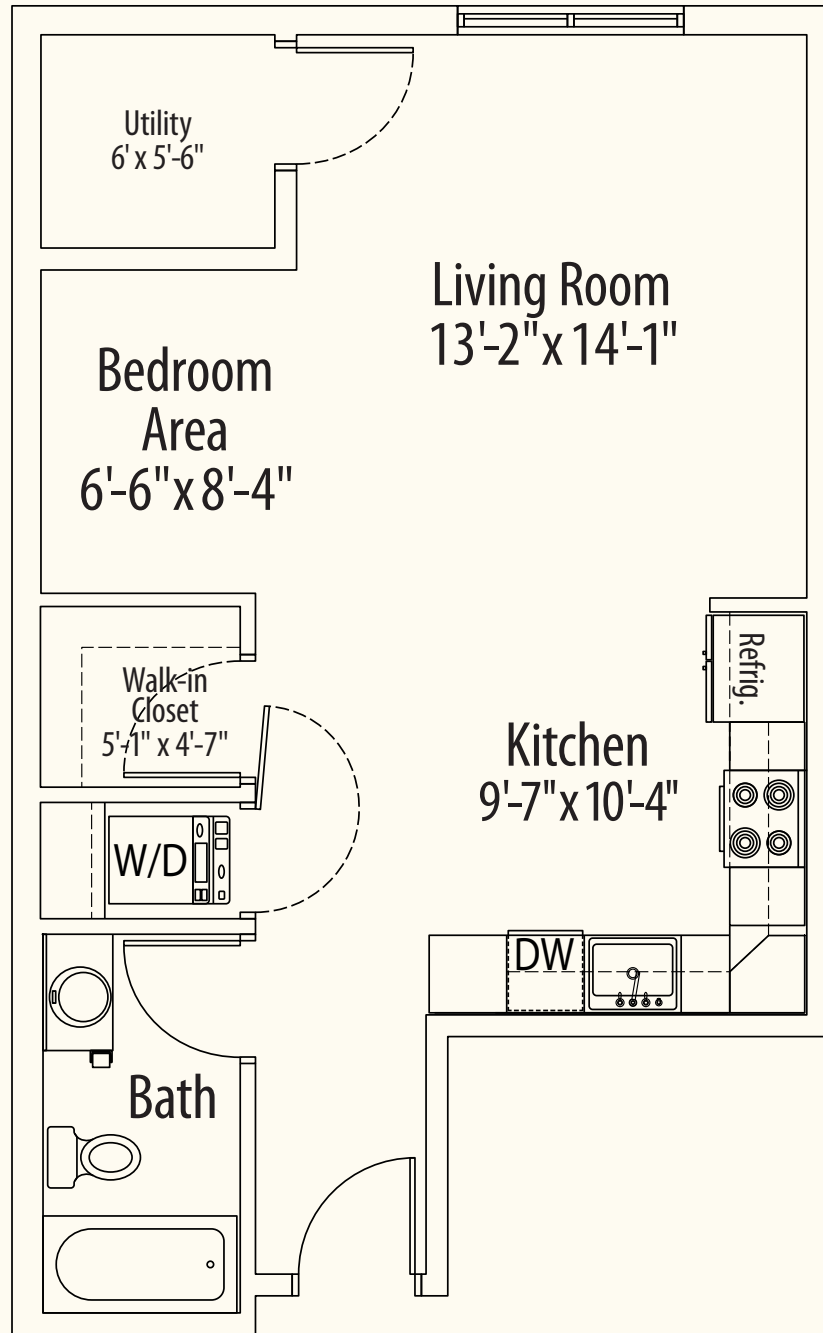
717-775-6424

www.TripleCrownCorp.com



Triple Crown Corporation
DEVELOPERS ■ BUILDERS ■ MANAGERS

Providing excellence in real estate services since 1977



Floor Plan E

567 ft.²
Studio

Current Rental Rate

\$ _____

per month for a _ month lease

For Leasing Information:

717-775-6424

www.TripleCrownCorp.com



Triple Crown Corporation
DEVELOPERS ■ BUILDERS ■ MANAGERS

Providing excellence in real estate services since 1977