

**RESERVE TODAY FOR
MAY 2019 OCCUPANCY!**



We'd Love to See YOU in Our Community!

1 & 2 Bedroom Apartments with Elevator
East Pennsboro Township, Camp Hill
East Pennsboro School District

Triple Crown
Corporation at

CENTERPOINTE APARTMENTS

Leasing Office:

20 House Avenue
Camp Hill, PA 17011

For more information or
to reserve your home today,
CONTACT US!

Call or Text: 717-214-4580

Visit us online at:

www.TripleCrownCorp.com

Updated 3/15/19

Home Amenities

Apartment:

- 1 & 2 bedroom floor plans
- 1, 2, or 2½ baths
- Spacious, modern designed homes
- Private balcony/patio
- Upgraded full size washer & dryer
- Full appliance package
- Upgraded matte slate finish refrigerator, oven, microwave, and dishwasher
- Quartz countertops
- Vessel bowl sink in baths
- Garbage disposal
- Oversized windows
- Window blinds throughout
- Central air conditioning
- USB outlets in apartment home

Community Features

Community:

- Smoke free apartments
- Elevator in building
- Custom LED lighting in hallways
- Pet-friendly (breed/size restrictions)
- On-site leasing office
- 24-hour emergency service
- Owner managed
- Resident events
- Online payment accepted

Proudly
developed, built
& managed by:



Triple Crown Corporation
DEVELOPERS ■ BUILDERS ■ MANAGERS

Providing excellence in real estate services since 1977

Rent & Application Details

Application Fee: \$35.00 per person

Reservation Fee*: \$200.00

**Reservation fee required to hold the home*

Please note: after application approval, you may not cancel without forfeiting this fee.

Security Deposit*: starting at ½ month's rent

**Applies to qualified applicants. See leasing associate for details.*

Pet Privilege Fee*: 1 pet \$250.00/2 pets \$350.00

**Non-refundable. Small breed dogs 25 lb. and under.*

Doggie DNA Program*: \$50.00/dog

**One-time fee. Non-refundable.*

Monthly Pet Rent:

1 Pet: \$30.00

2 Pets: \$50.00

We cannot allow:

Dogs over 25 lb. weight. Pit Bulls (Staffordshire Terriers), Doberman Pinchers, Rottweilers, Chow Chows, Siberian Huskies, Akitas, Presa Canarios, Alaskan Malamutes, German Shepherds, Wolf hybrids and Great Danes are not permitted to occupy or visit the rental homes. Similarly, any animal with a bite history, aggressive nature or similar offense will be restricted as well. Mixes of these breeds will also not be accepted.

Rabbits, ferrets, snakes or other reptiles are also not permitted in the community

Included in Rent:

- Trash
- 24-Hour Maintenance
- Landscaping
- Snow Removal

Resident Responsibilities:

- Electric
- Water
- Sewer
- Gas Heat
- Renter's Insurance

About Us



Triple Crown Corporation

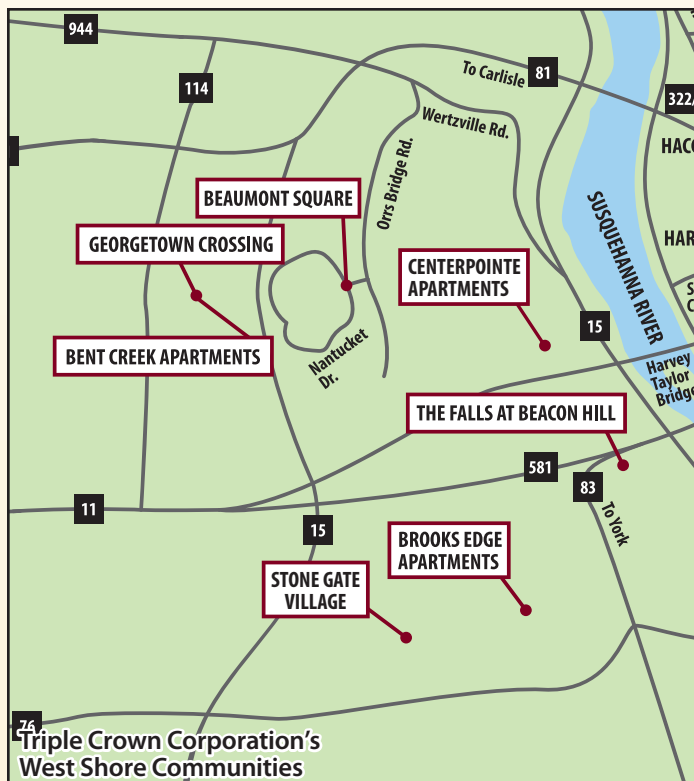
DEVELOPERS ■ BUILDERS ■ MANAGERS

Providing excellence in real estate services since 1977

Triple Crown Corporation is a financially stable and family-owned company, "**Providing excellence in real estate services,**" in the Harrisburg area since 1977. We are a builder, developer, and property management company. We strive to provide excellent real estate services of the highest quality and best value to the customer. This goal challenges us to deliver excellent service consistently to each of our customers.

Now in its second and third generation, Triple Crown Corporation continues to excel in acquiring, developing, and managing property. We focus on expanding into new areas while adjusting to a changing economy. Since 2007, we've been developing, following, and measuring 3-year strategic growth plans to help us stay focused on our core business operations. We attain results through flexibility, anticipation and resilience. Our continued success, long-term profitability, and growth depend heavily on three factors: resourceful people doing purpose-driven work; delivering high quality places to live and work, as well as growing through best value acquisitions; and margin optimization.

www.TripleCrownCorp.com



Directions

From I-81 South:

Take Exit 66B (Front St.) towards downtown Harrisburg. Keep left at the fork and follow signs to merge onto N. Front Street. Turn Right onto the Harvey Taylor Bridge. Take the Erford Rd. exit ramp, then keep left to turn left onto Erford Rd. Turn left onto Senate Ave. Turn right onto House Ave. to community on left.

Contact Our Leasing Office

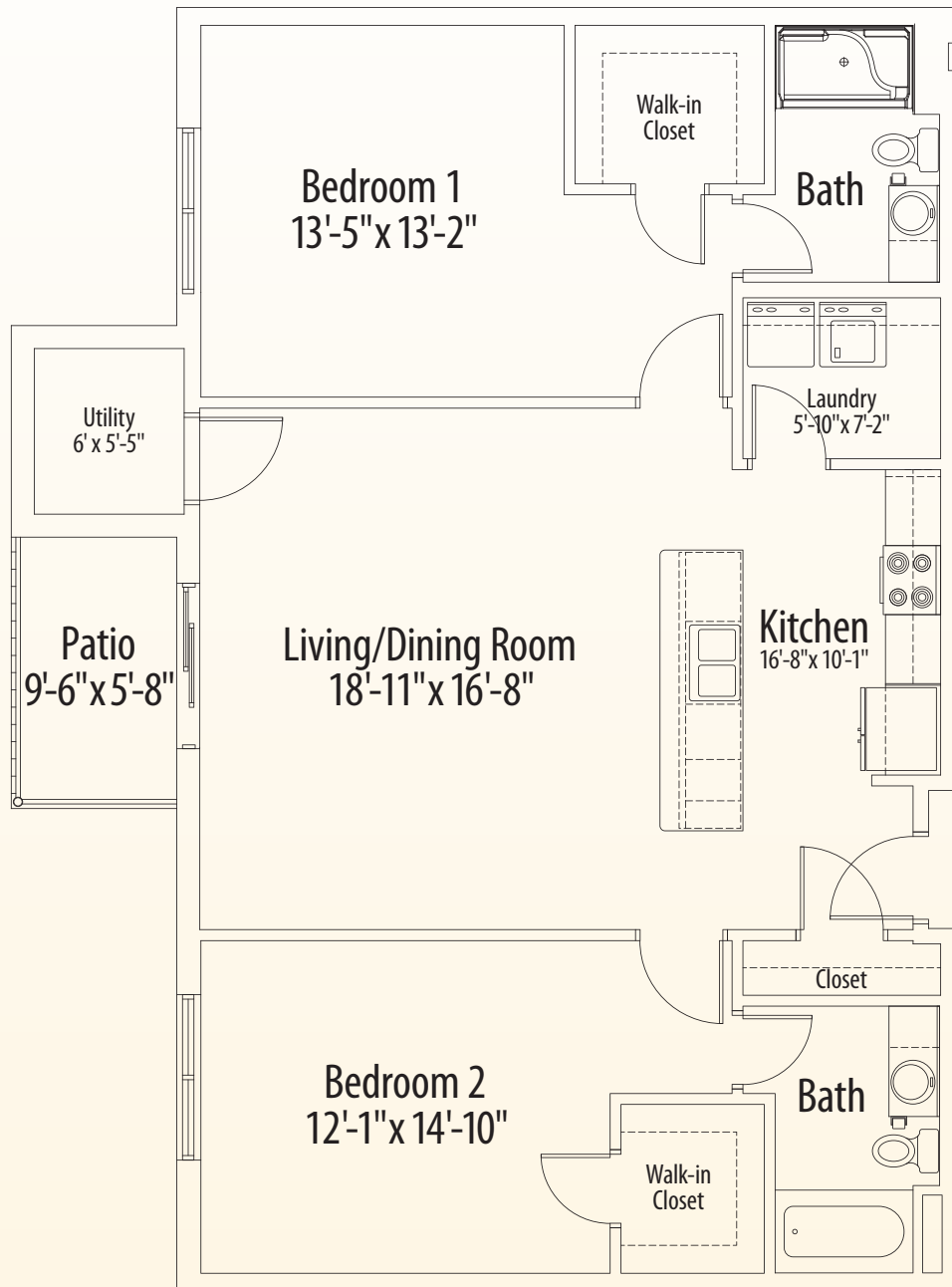
Call or Text: 717-214-4580

CenterPointe Apartments are located at:

20 House Avenue
Camp Hill, PA 17011

Triple Crown Corporation at

CENTERPOINTE APARTMENTS



Floor Plan A

1,243 ft.²

2 Bedroom • 2 Bath

Current Rental Rate

\$ _____

per month for a _ month lease

Leasing Office:

20 House Road • Camp Hill, PA 17011

717-214-4580

www.TripleCrownCorp.com

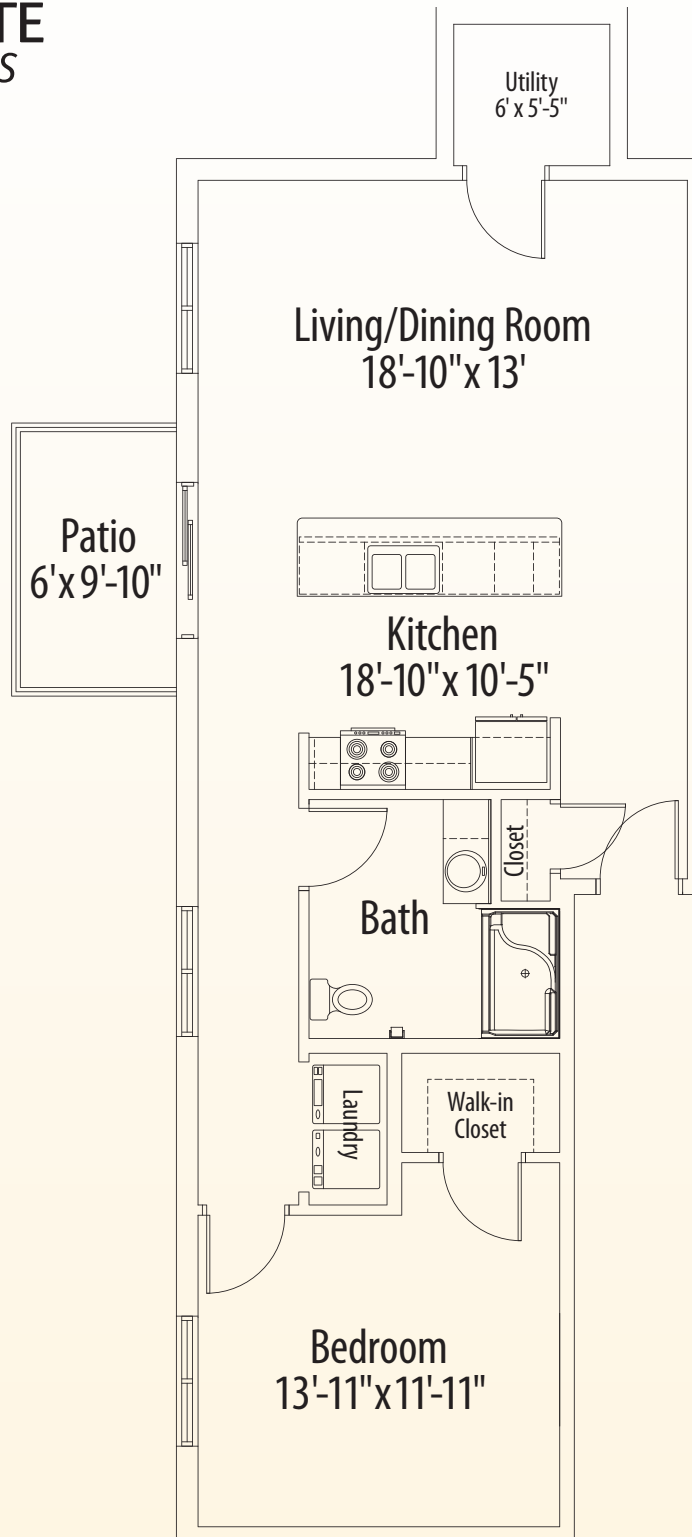


Triple Crown Corporation
DEVELOPERS ■ BUILDERS ■ MANAGERS

Providing excellence in real estate services since 1977

Triple Crown Corporation at

CENTERPOINTE APARTMENTS



Floor Plan B

886 ft.²

1 Bedroom • 1 Bath

Current Rental Rate

\$ _____

per month for a _ month lease

Leasing Office:

20 House Road • Camp Hill, PA 17011

717-214-4580

www.TripleCrownCorp.com

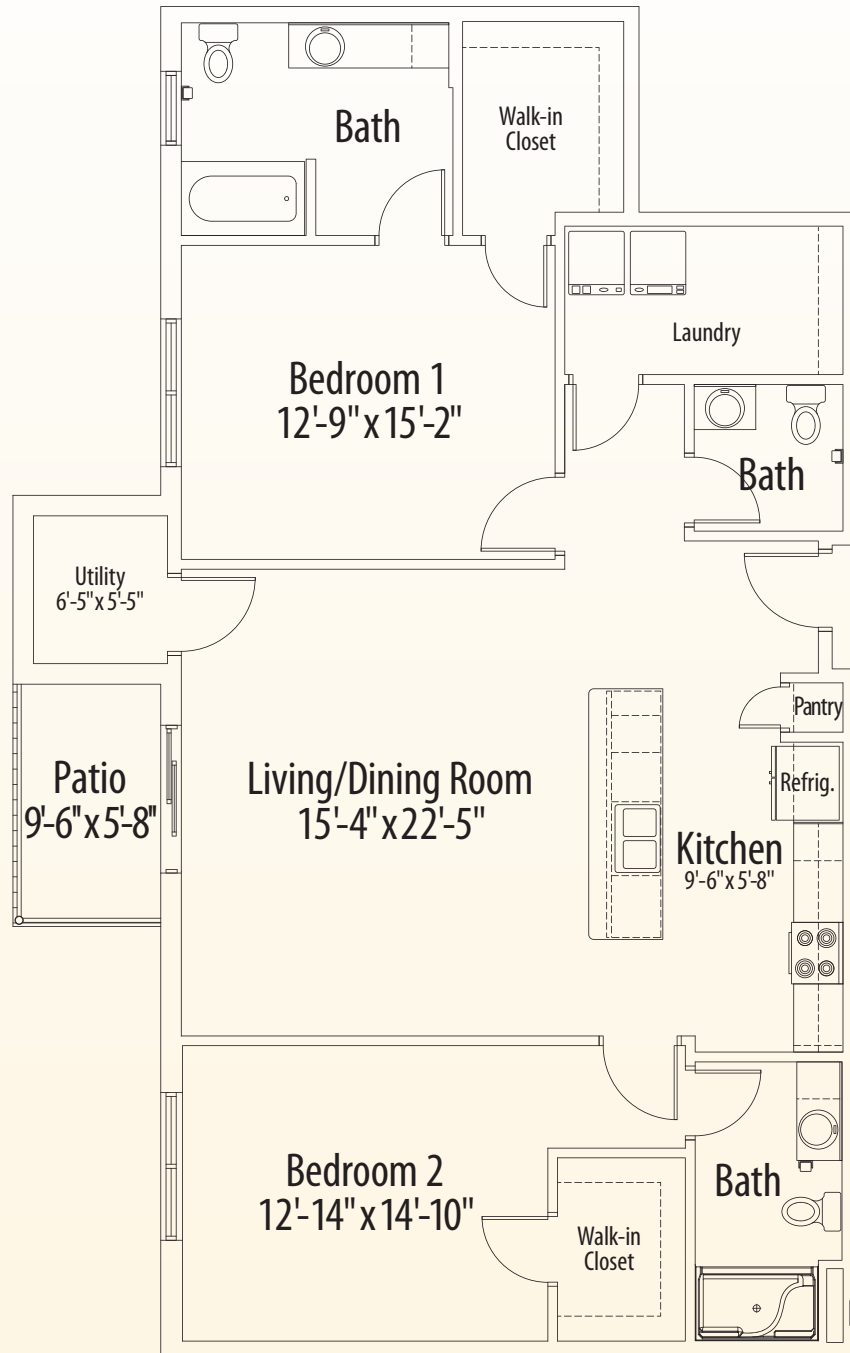


Triple Crown Corporation
DEVELOPERS ■ BUILDERS ■ MANAGERS

Providing excellence in real estate services since 1977

Triple Crown Corporation at

CENTERPOINTE APARTMENTS



Floor Plan C

1,393 ft.²

2 Bedroom • 2½ Bath

Current Rental Rate

\$ _____

per month for a _ month lease

Leasing Office:

20 House Road • Camp Hill, PA 17011

717-214-4580

www.TripleCrownCorp.com

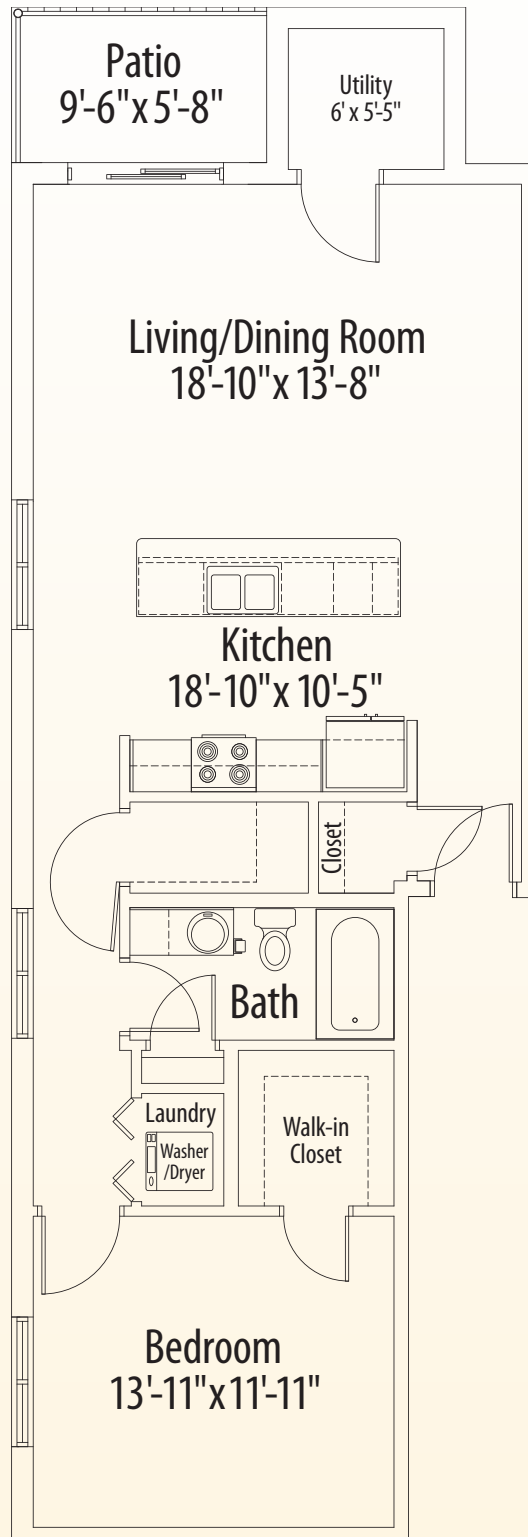


Triple Crown Corporation
DEVELOPERS ■ BUILDERS ■ MANAGERS

Providing excellence in real estate services since 1977

Triple Crown
Corporation at

CENTERPOINTE APARTMENTS



Floor Plan D

886 ft.²

1 Bedroom • 1 Bath

Current Rental Rate

\$ _____

per month for a _ month lease

Leasing Office:

20 House Road • Camp Hill, PA 17011

717-214-4580

www.TripleCrownCorp.com



Triple Crown Corporation
DEVELOPERS ■ BUILDERS ■ MANAGERS

Providing excellence in real estate services since 1977