

Triple Crown Corporation

DEVELOPERS ■ BUILDERS ■ MANAGERS

Providing excellence in real estate services

Is Proud to Present...

154 Schoolhouse Road, Palmyra, PA 17078



South Londonderry Township
Palmyra, PA
Palmyra Schools

Visit us online at
www.CarriagePark.cc



The "Barouche" (Homesite #1)

This "Barouche" Plan Includes:

- Almost 1/2 acre! (.47)
- 9' first floor ceiling height
- Formal living room and dining room with crown molding and chair rail
- Oversized gas fireplace
- Breakfast bar plus nook
- Full stainless steel GE appliance package includes washer/dryer/refrigerator
- Spacious master bedroom with private bath
- Full, poured concrete basement with bath rough-in
- 10-year plus 1-year post settlement warranties
- Economical natural gas community
- All this and more for \$255,900

**FREE UPGRADE
WHEN YOU
PURCHASE THIS
HOME ...**

*G.E. "Harmony Series"
Washer & Dryer!*



Updated: 9/24/09



Triple Crown Corporation

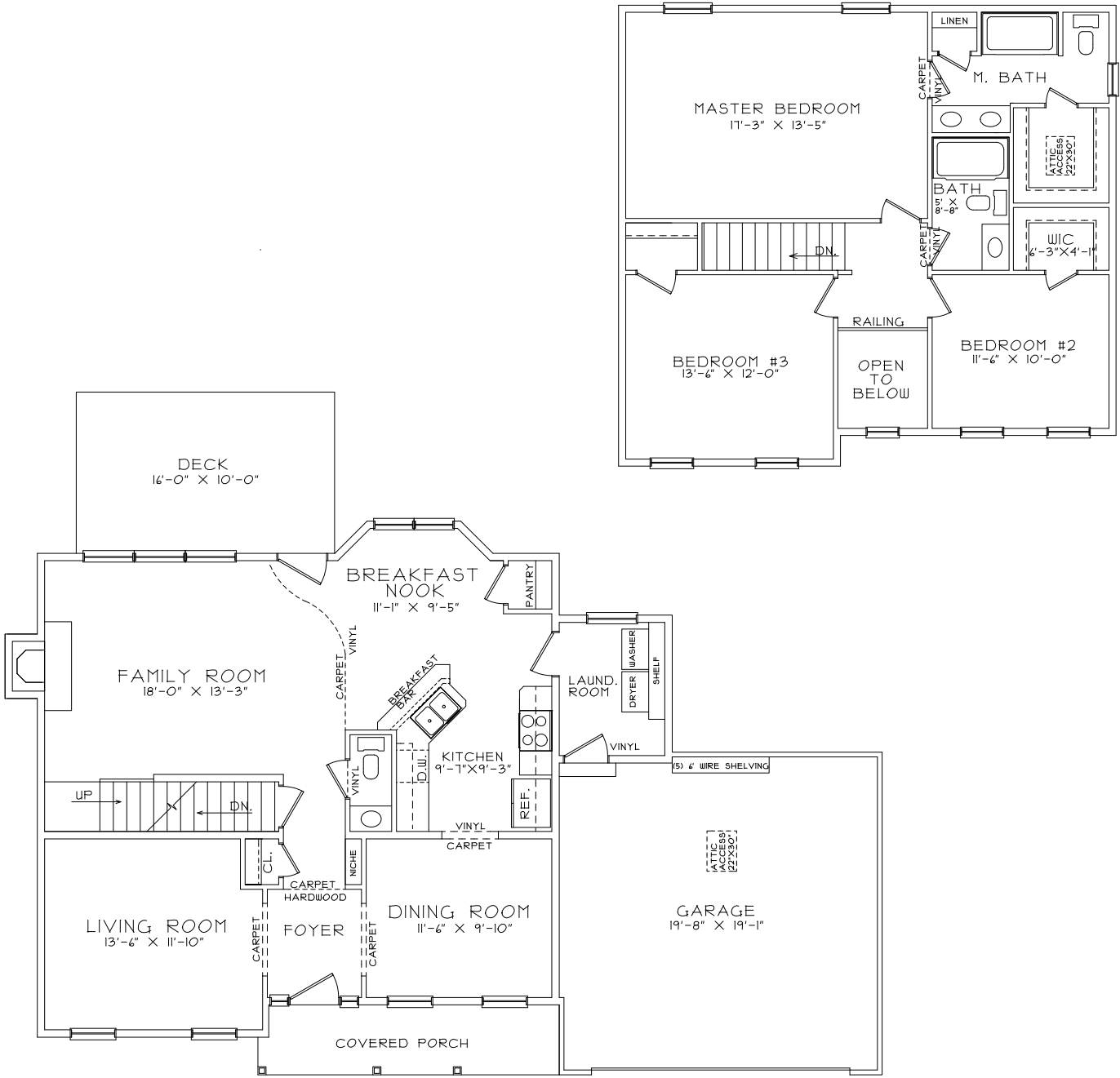
Lynn Baker, 717-884-1470

Model Open Thurs.-Mon. 12-5PM



Directions: RT 322 East into Campbelltown, T/R onto Schoolhouse Road to community on left.

Prices and incentives are subject to change without notice. Floorplans are subject to change and are for illustrative purposes only. All prices, floor plans, options and elevations are subject to errors and omissions. Please contact community manager for specific details about this community.



First Floor - 1,019 SF
 Second Floor - 891 SF
 Total - 1,910 SF